

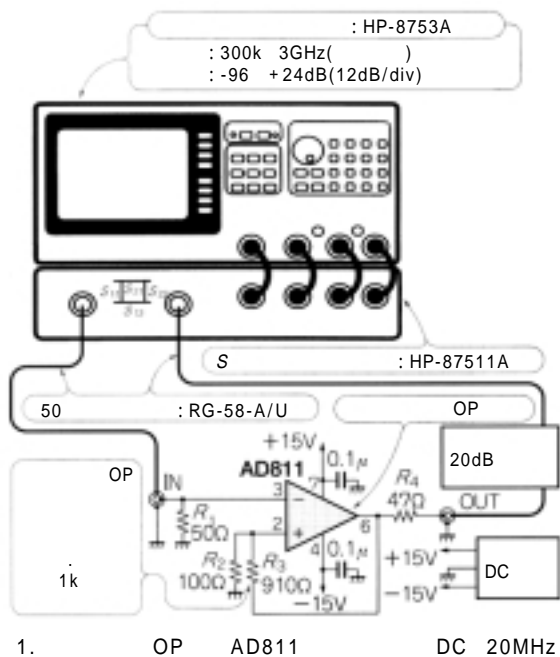
3

NTSC

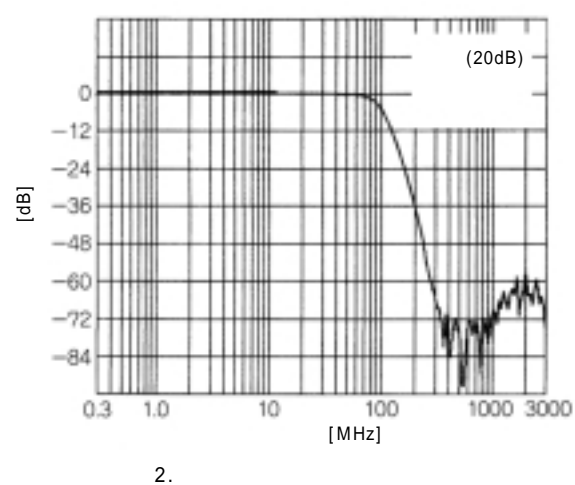
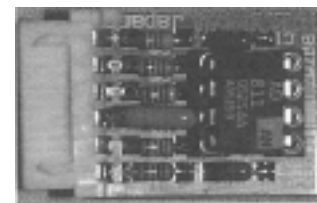
AD811 1 DC 20MHz

< >
 : DC 20MHz($V_{CC} = \pm 5V@50$)
 : $\pm 10V$
 : $\pm 5V@50$
 : 10k $\pm 10\%$
 : 50 $\pm 10\%$
 : 0 20dB
 DG/DP : 0.1%/0.1°
 : 100mA
 / : $\pm 15V/120mA$

1 OP AD811(
) DC 20MHz 10V_{p-p}@ $R_L = 50$
 1
 . 1MHz
 OP



1.



5 10MHz
 OP 가
 OP 100MHz
 CLC103()
 +40dB OP = 10GHz
 OP 가 IC
 OP R₃ 1k
 가 +20dB
 100 가
 50 μA 10k
 AD811 1MHz
 , OP 100pF
 <律野 徹>

NJM246 1 5MHz

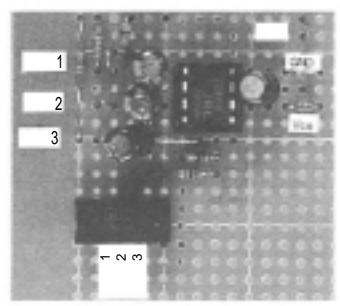
< >
 : 5 12V
 : 75
 : 6.2±0.5dB
 : 3 1
 : ±1dB@1M 5MHz

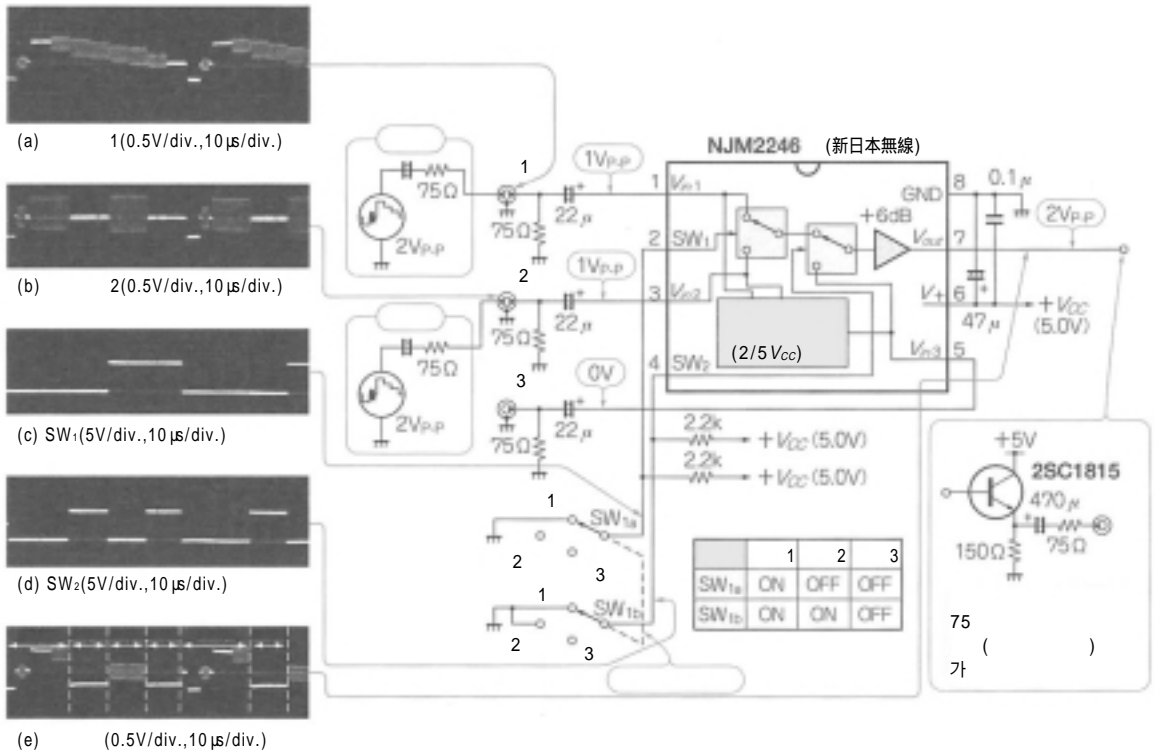
()
 1 新日本無線製
 新日本無線
 가

1 NJM2246(新日本無線)
 3 1 1

5MHz,
 7M 10MHz

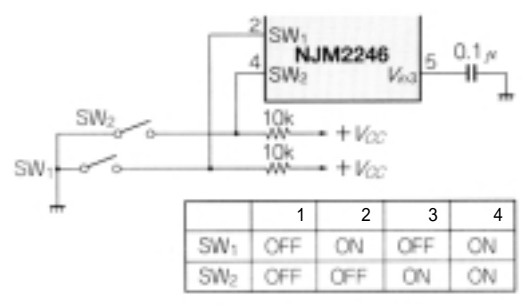
NJM2246
 NJM2246 2 1 2 1. 3 1
 3 6dB





(a) 1(0.5V/div.,10μs/div.)
 (b) 2(0.5V/div.,10μs/div.)
 (c) SW₁(5V/div.,10μs/div.)
 (d) SW₂(5V/div.,10μs/div.)
 (e) (0.5V/div.,10μs/div.)

2. 1. NJM2246 3 1



2. 1 2 1

1.

	[V]		6dB	75	[Hz]
NJM2233B	5 12	2	-	-	10M
NJM2234	4.75 13	3	-	-	10M
NJM2243	9 13	3	-	-	10M
NJM2244	5 12	3	-	-	10M
NJM2245	8.5 13	3		-	5M

2 2 1
 . 2
 . 1 2
 3

NJM2246 75
 1
 置)

(後

4 가 3

3
 .<松村南>

NJM267 1

< >

: 1 2
 : $6.2 \pm 0.5\text{dB}$
 : $\pm 0.5\text{dB}$
 : $\pm 1\text{dB}(1\text{M} \sim 7\text{MHz})$
 : 75
 / : 5V/14mA

(3 6)

3 4, 7 6
 가
 가
 가

3

1 1 2 . 1

NJM2267

, 2

6dB

NJM2267

6dB

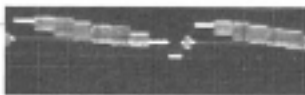
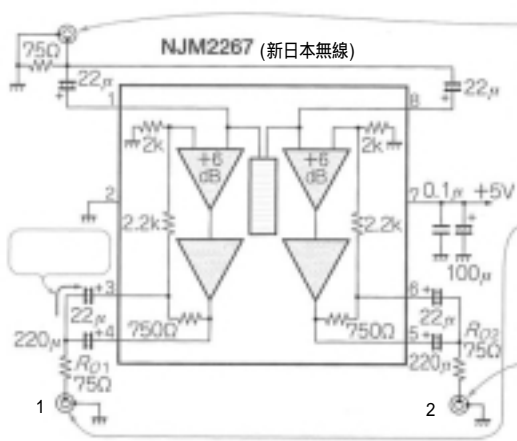
2

75 가
 7MHz)
 (Digital Video)

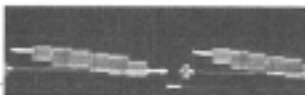
S-VHS

Hi-8

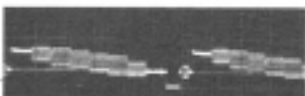
$\pm 1\text{dB}(1\text{M} \sim 7\text{MHz})$
 DV



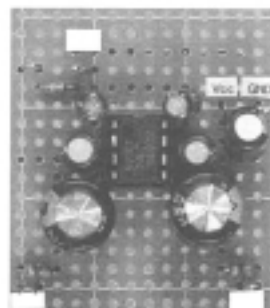
(a) (0.5V/div., 10µs/div.)



(b) 1(0.5V/div., 10µs/div.)



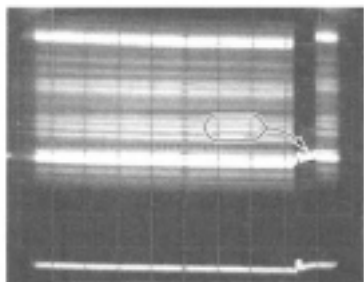
(c) 2(0.5V/div., 10µs/div.)



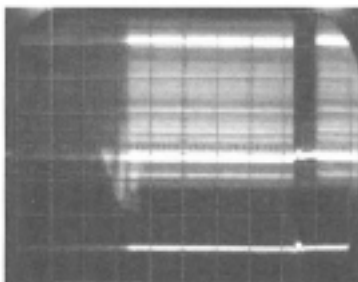
2.

1.

1. 가 1 2



(a)



(b)

3.

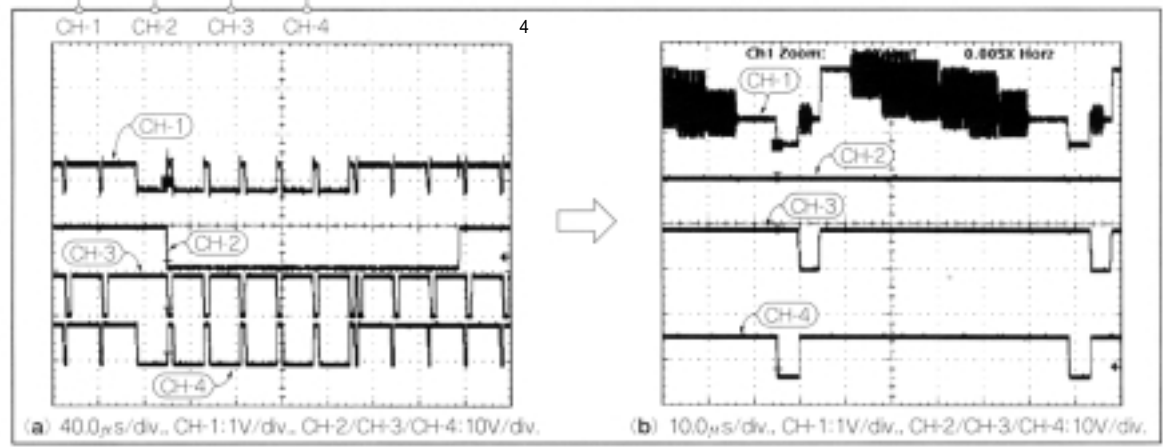
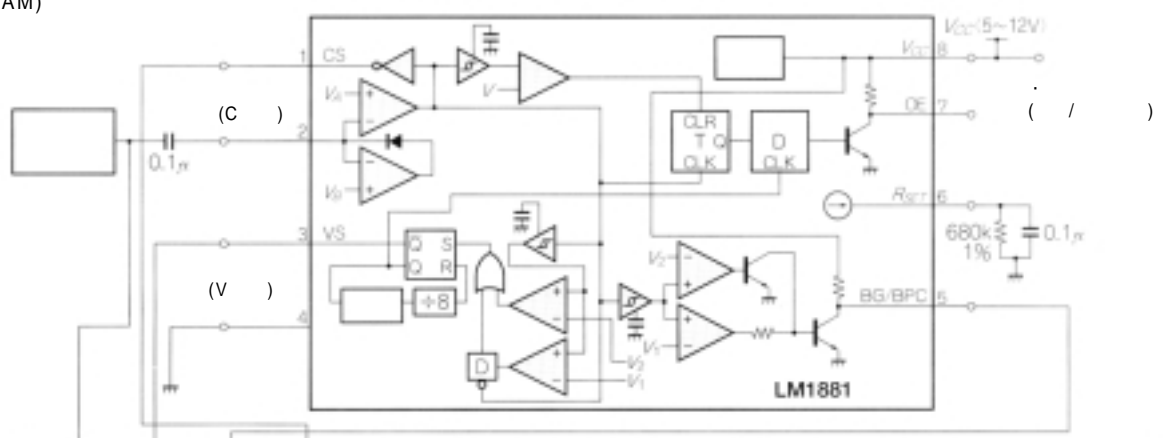
(0.1V/div., 5µs/div.)

9.0V IC 4.85 100 μ F
 IC 가
 가
 NJM2267 6.2dB 6dB
 $R_{O1}(R_{O2})$
 0.1 μ F (松村南)

LM1881 1 NTSC/PAL/SECAM

< > : 10k
 : 5 12V : NTSC/PAL/SECAM

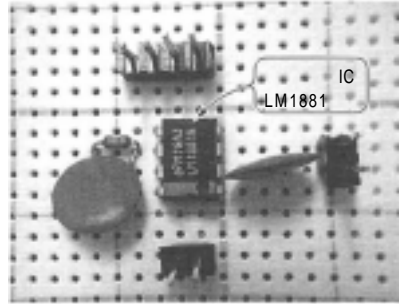
1. (NTSC/PAL/SECAM)



2.

1 NTSC/PAL/SECAM

1) . LM1881()
가 /



NTSC

4가

1.

LM1881

2

1

1%

() 가
가 가

2

NTSC

가

<森田>

6

680k

AD722 1

NTSC/PAL

< >

: , Y , C
: NTSC, PAL
: 75
: 75
: 0 714mV(NTSC), 0 700mV(PAL)
/ : 5V/40mA

)

f_{in}

AD722

2 AD722()

가

, , , PLL

AD722

, MPEG2

가

IC

1

VGA

NTSC

NTSC

PAL 2

Y , C

NTSC

가

f_{sc} (NTSC : 3.

579545MHz)

$4f_{sc}$

. H_{sync}

VGA

H ()

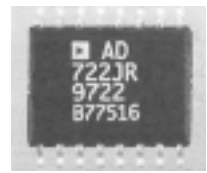
C

(), V_{sync}

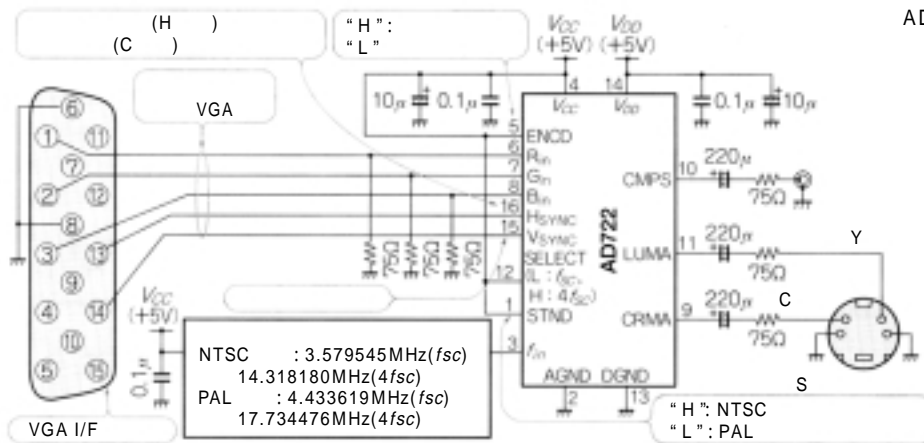
V (

VGA

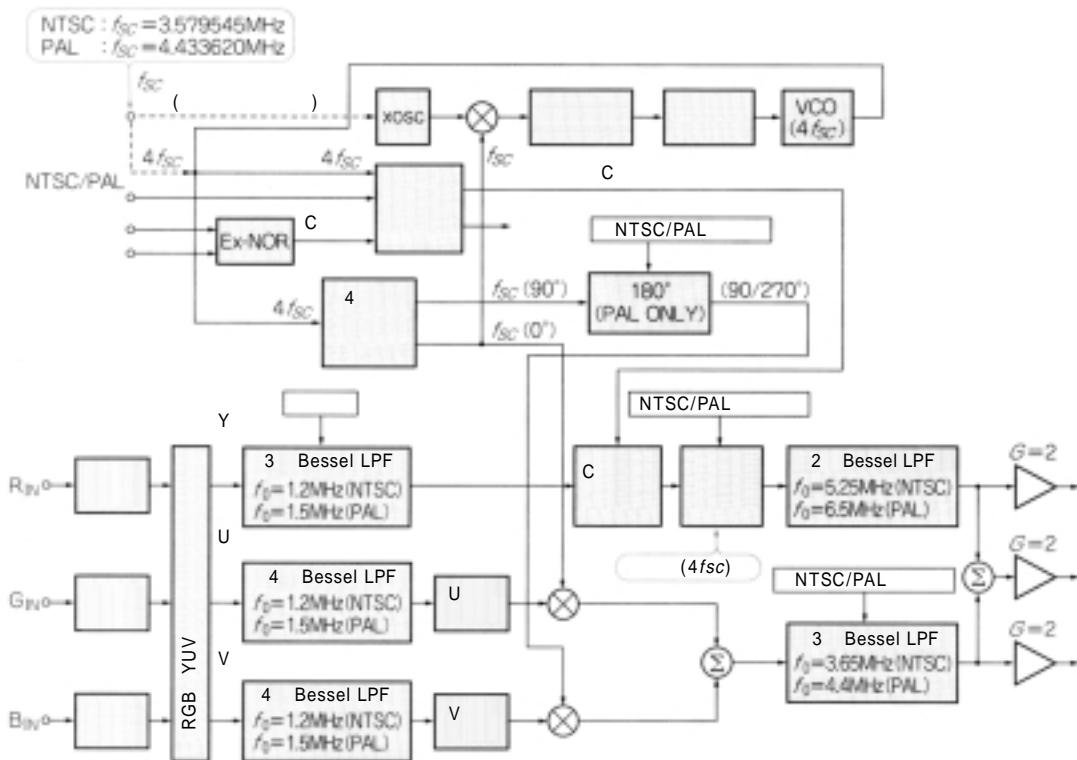
VGA) NTSC (RGB
) . <未木豊>



1. AD722



1. AD722 RGB



2. AD722

EL4583C 1



- (C)
- (V)
- (H)
- / (/)

1 EL4583C

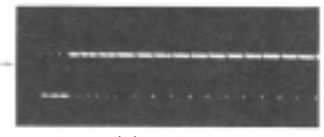
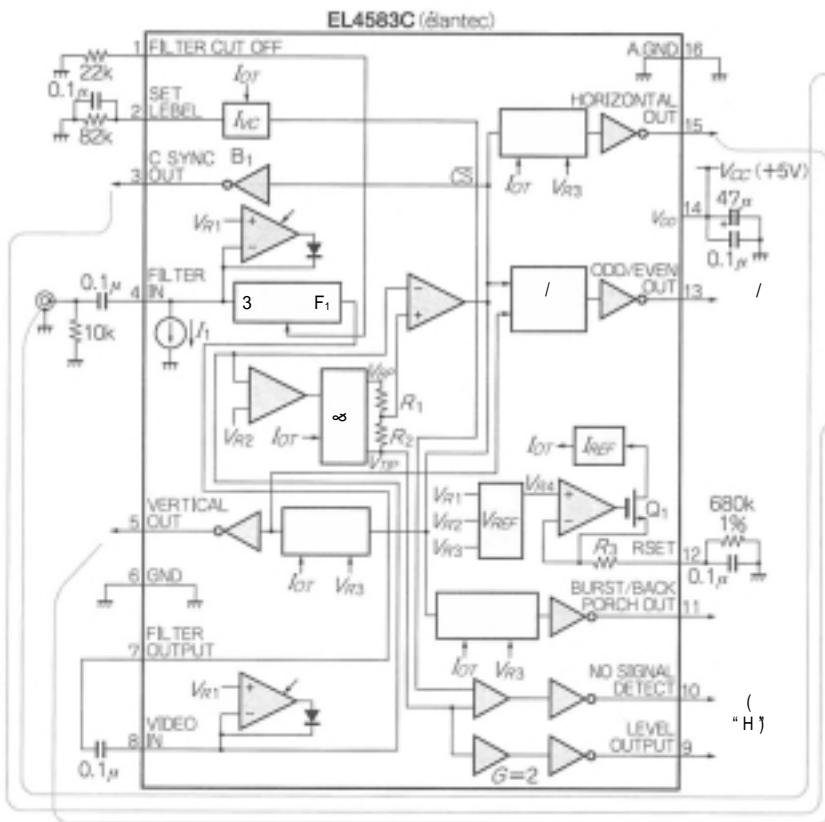
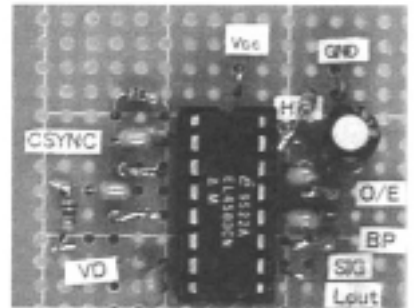
1 , 2

EL4583
CMOS

elantec社

IC

1.



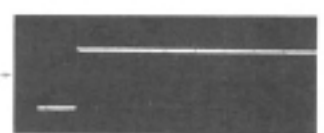
(a)



(b) (H)



(c) (C)



(d) (V)

2.

(2V/div., 200µs/div.)

1. EL4583

(NTSC/PAL/SECAM)

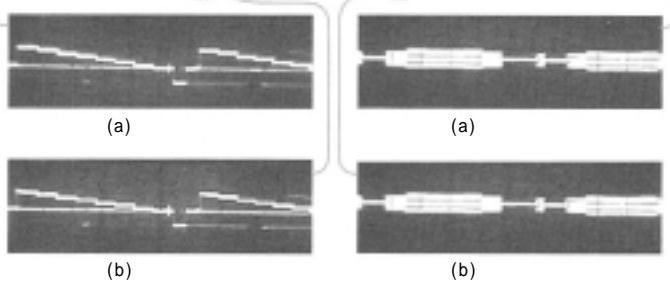
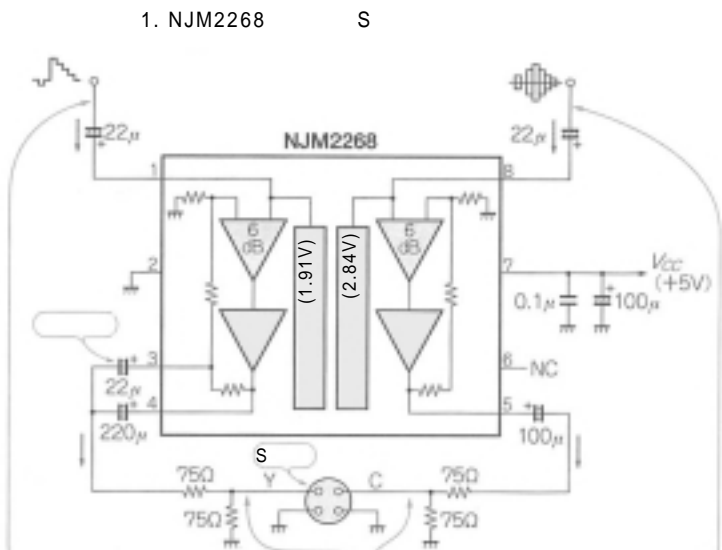
.
 ("H) 5 μ s 가

 H (C) <松村南>

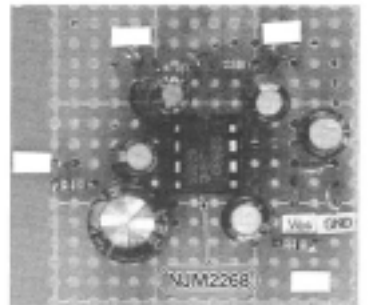
NJM2268 1 S

< >
 : 5V
 : 6dB
 : 2(Y /C)
 : 2(Y /C)
 : 75
 : (Y)

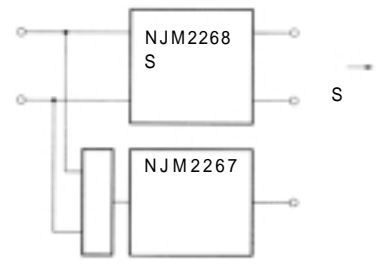
1 NJM2268(新日本無線) S
 . 1
 NJM2268 2 6dB 가
 . 1 (Y)
 ,
 1
 (C) ,



2. (Y) (0.5V/div., 10 μ s/div.)
 3. (C) (0.5V/div, 10 μ s/div.)



1. S



2. NJM2267

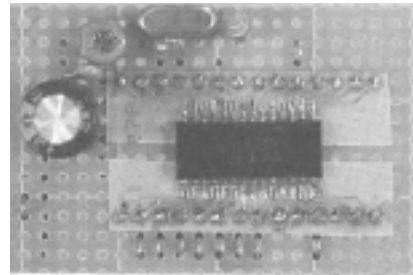
2 S

DC 가

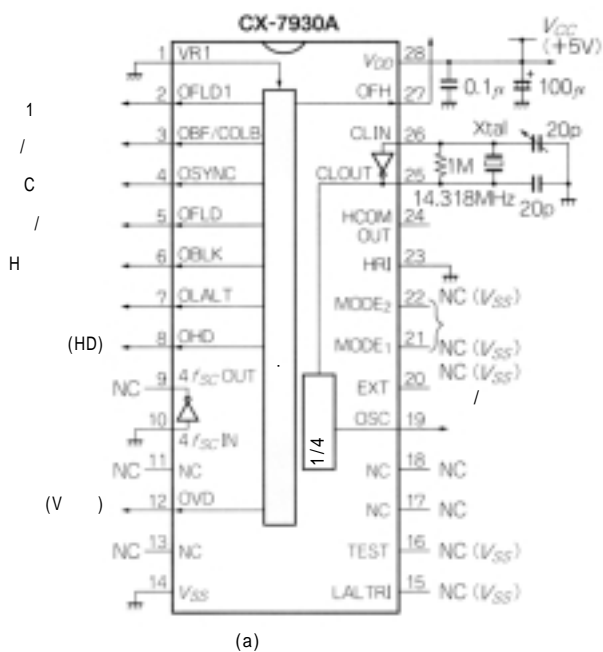
2 NJM2267
S

<松村 南>

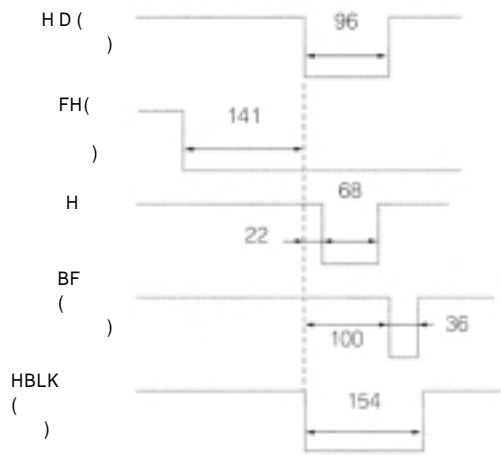
CX-7930A 1



1.

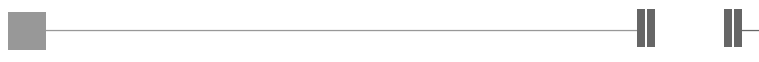


(a)



(b)

1. CX-7930A



1(b) CX-7930A NTSC
(秋月電子通商)

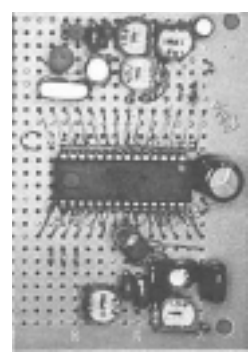
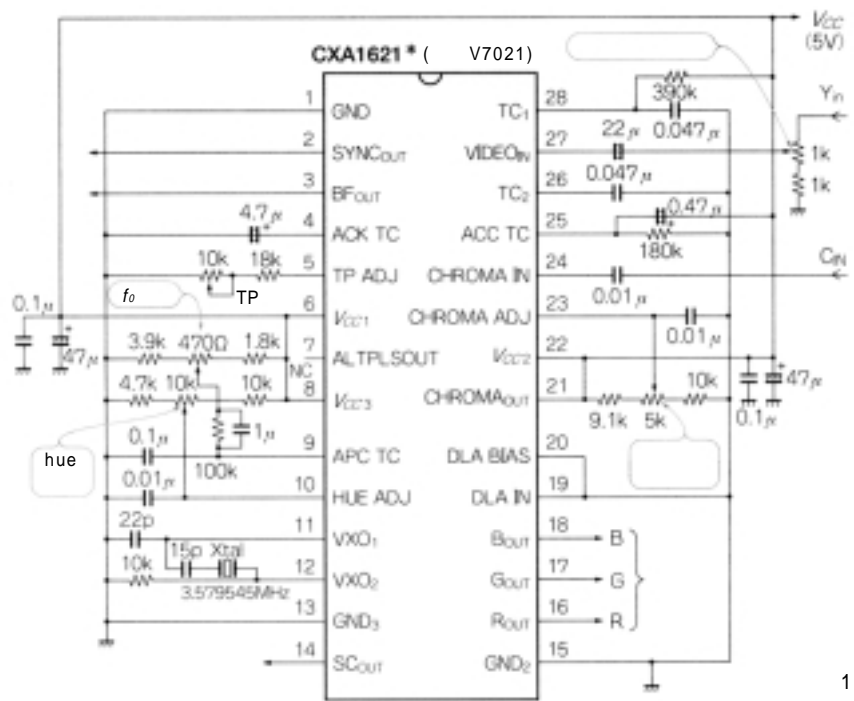
1(a) CX-7930A() 가
1 CXD1217 <松村南>

CXA1621 1 RGB

< >
: (hue),
RGB : $1 \pm 0.1V_{p,p}$
: 500mV
hue 가 : $\pm 30^\circ$
가 : -20 0dB
: $5 \pm 0.25V$

RGB
CXA1621() V7021
2, 3
1 V7021
CXA1621 (2)
(14)
(21)
가 . <松村南>

1 RGB 가



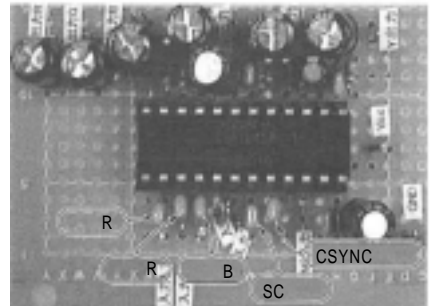
1. RGB

1. CXA1621 RGB

* : 秋月電子通商

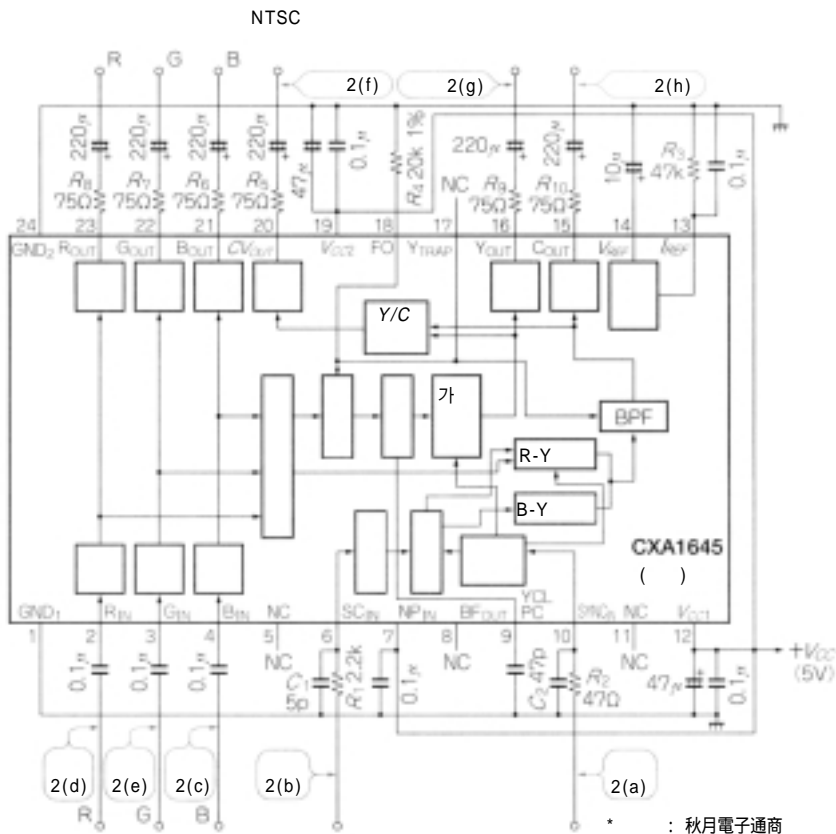
CXA1645 1

< >
 : 5MHz
 : 75 (75 가)
 : RGB / /
 : Y, C, , RGB
 : 5V

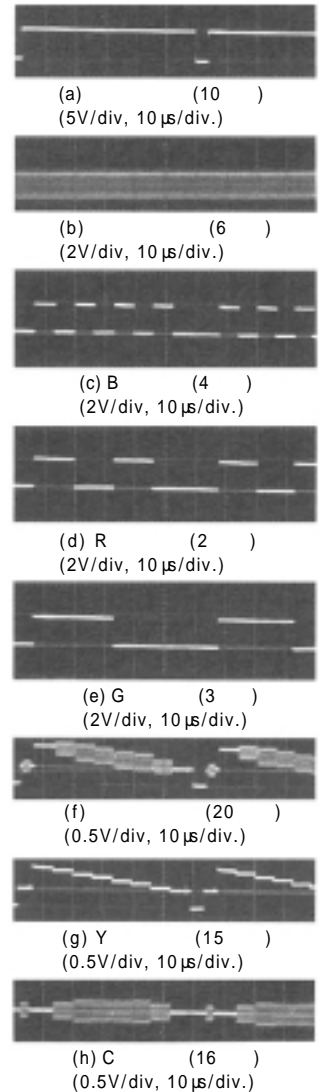


1. NTSC

1 RGB IC CX1645()
 NTSC . RGB ,
 , S Y , C RGB 가
 75



1. CXA1645* NTSC



2.



(R_5, R_{10}) 75 가
 . 1 , 2 가
 . 가 . CXA1645

 NTSC CXA1645 7 가 .
 $V_{CC} (+5V)$.
 RGB 0.4 5.0V_{P-P}@f=3.
 . 1V_{P-P} . 58MHz 50%
 가 가
 가 R_3, R_4 가
 . C_1, R_1, C_2, R_2 가 . <松村南>

